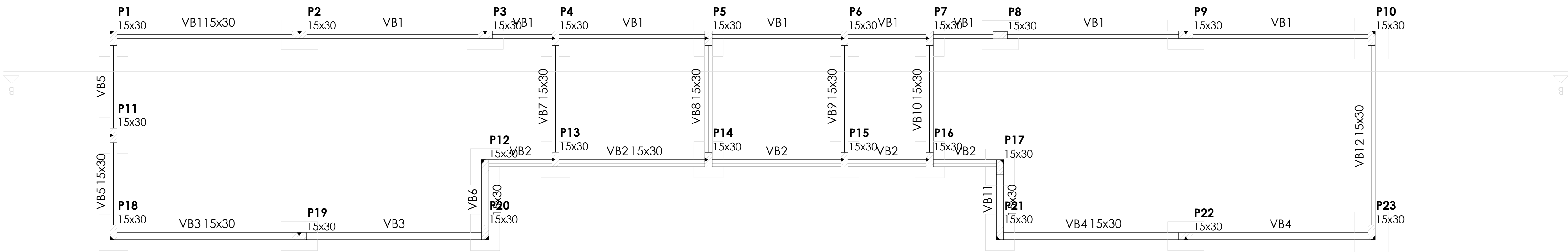


Planta de locação  
escala 1:100

Pilar				Fundação			
Nome	Seção (cm)	X (cm)	Y (cm)	Nome	Lado B (cm)	Lado H (cm)	
P1	15x30	67.50	475.00	A-1	31	65	80
P2	15x30	450.55	482.30	A-2	32	65	80
P3	15x30	832.50	482.30	A-3	33	65	80
P4	15x30	977.50	475.00	A-4	34	65	80
P5	15x30	1292.50	475.00	A-5	35	65	80
P6	15x30	1572.50	475.00	A-6	36	65	80
P7	15x30	1747.50	475.00	A-7	37	65	80
P8	15x30	1892.50	481.84	A-8	38	65	80
P9	15x30	2275.00	482.50	A-9	39	65	80
P10	15x30	2657.50	475.00	A-10	310	65	80
P11	15x30	67.50	275.00	B-1	311	45	80
P12	15x30	832.50	210.30	B-3	312	65	80
P13	15x30	977.50	225.30	B-4	313	65	80
P14	15x30	1292.50	225.00	B-5	314	65	80
P15	15x30	1572.50	225.00	B-6	315	65	80
P16	15x30	1747.50	225.00	B-7	316	65	80
P17	15x30	1892.50	210.00	B-8	317	65	80
P18	15x30	67.50	75.00	C-1	318	65	80
P19	15x30	450.00	67.50	C-2	319	45	80
P20	15x30	832.50	75.00	C-3	320	65	80
P21	15x30	1892.50	75.00	C-8	321	65	80
P22	15x30	2275.00	67.50	C-9	322	65	80
P23	15x30	2657.50	75.00	C-10	323	65	80



Forma do pavimento Fundação  
escala 1:50

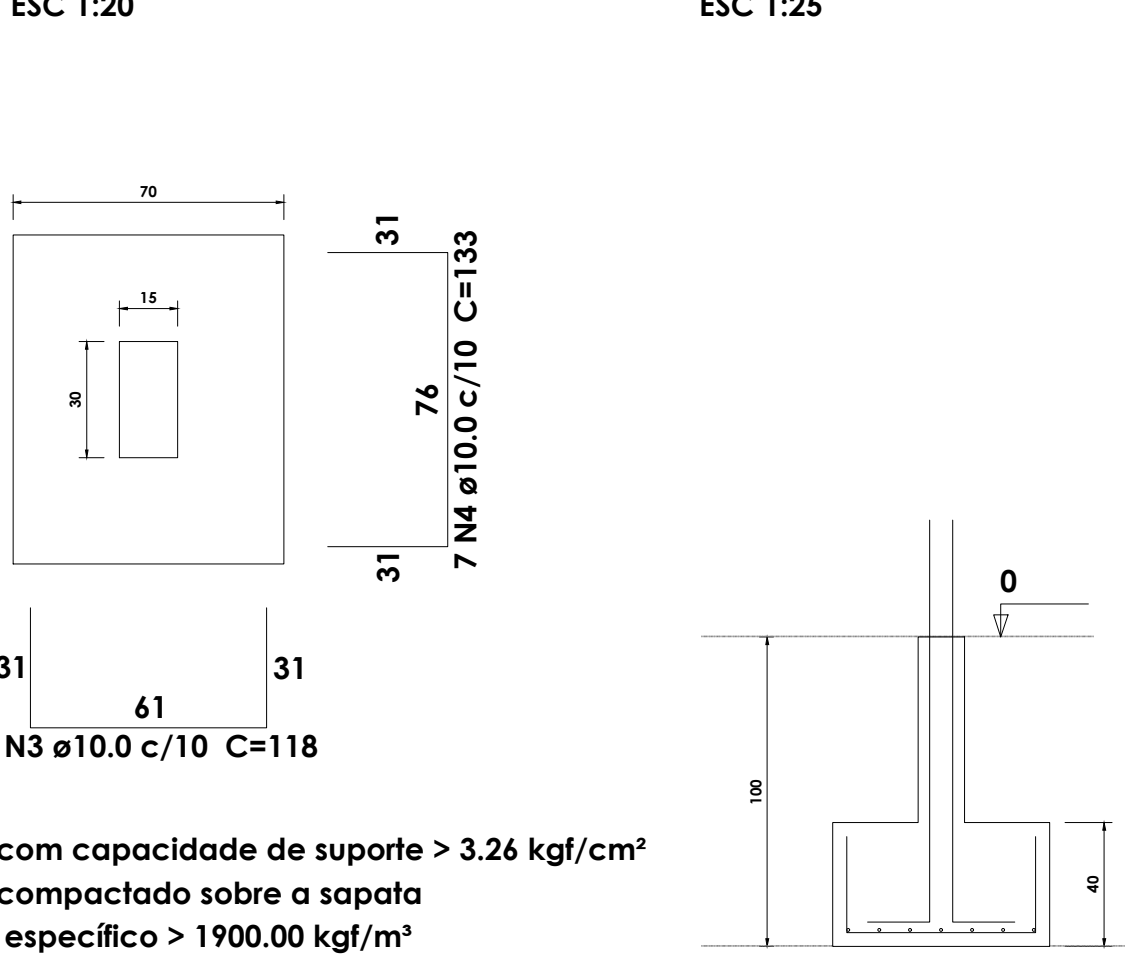
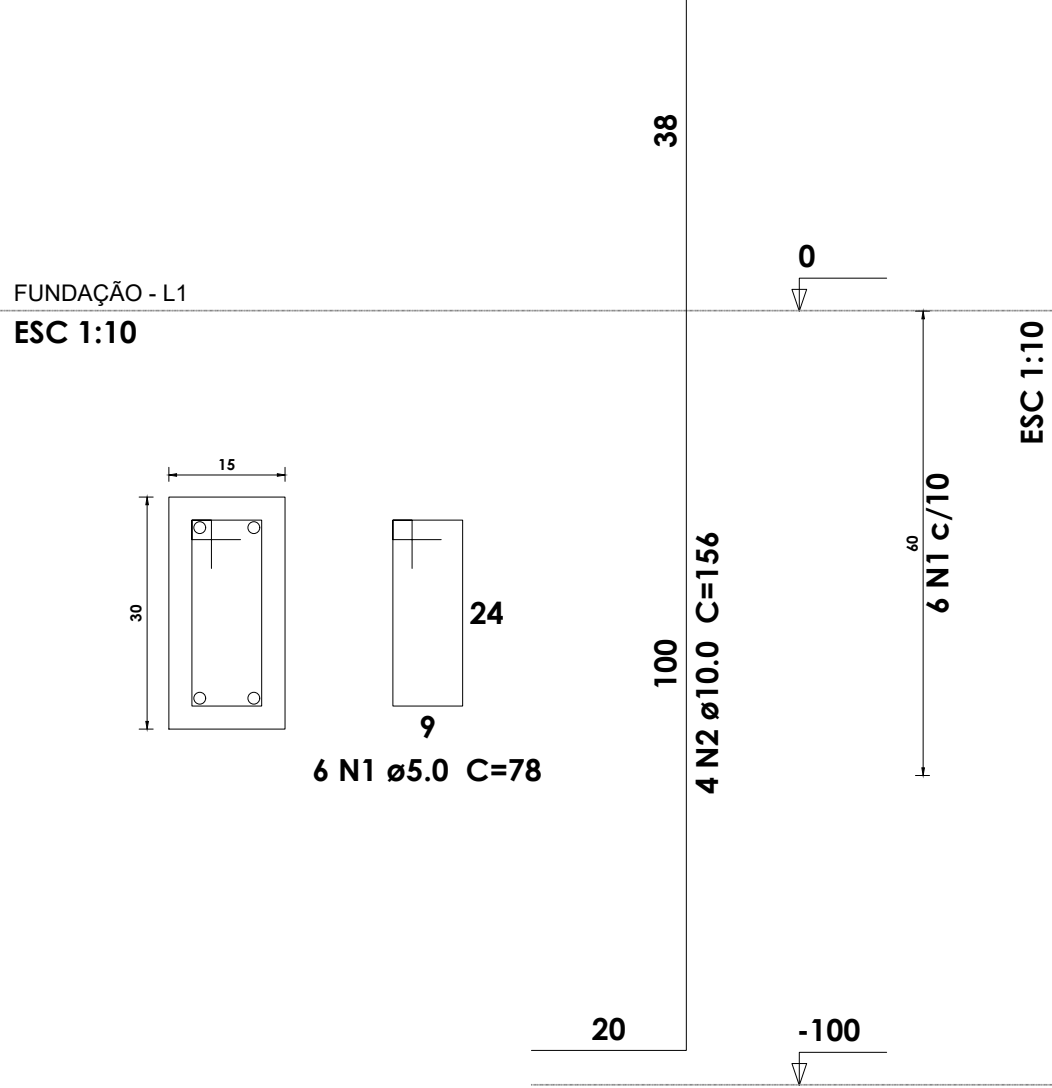
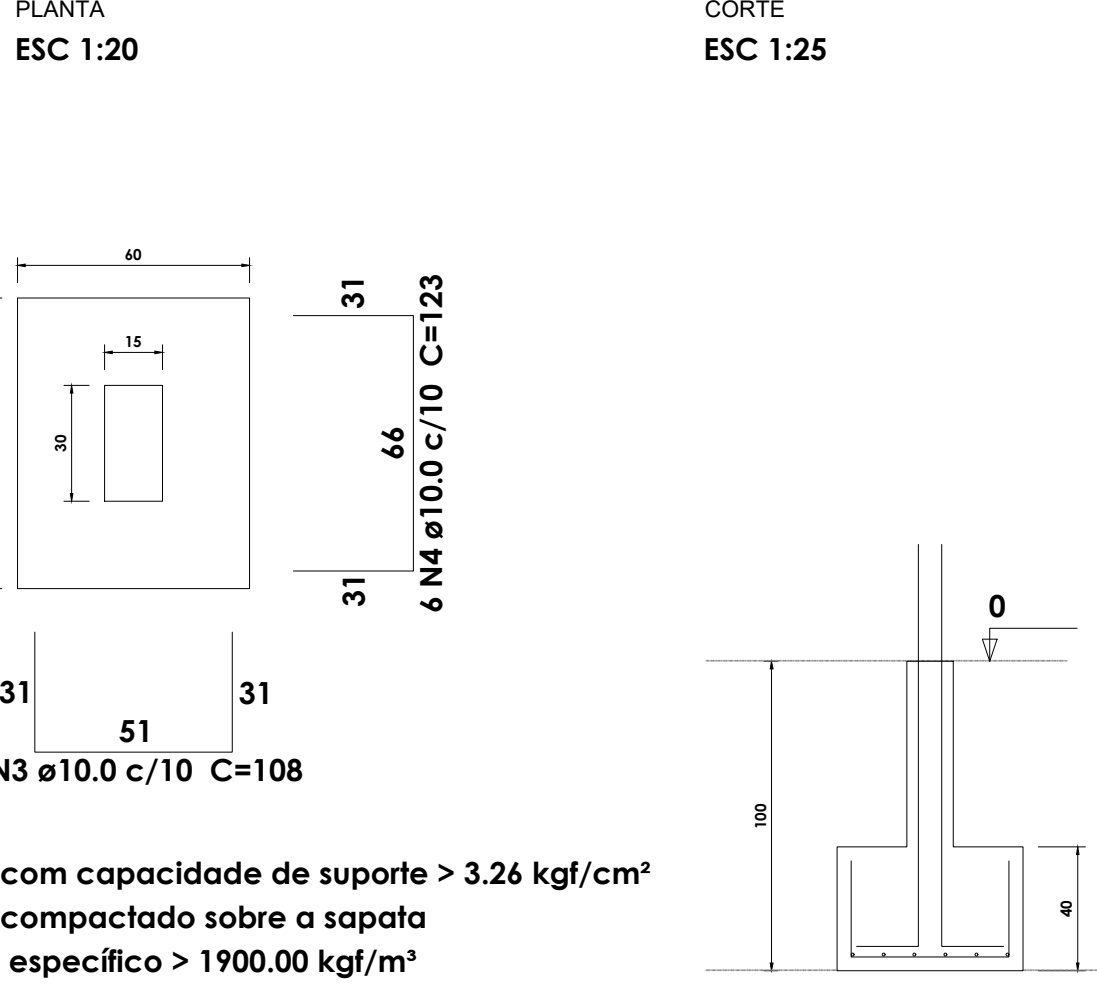
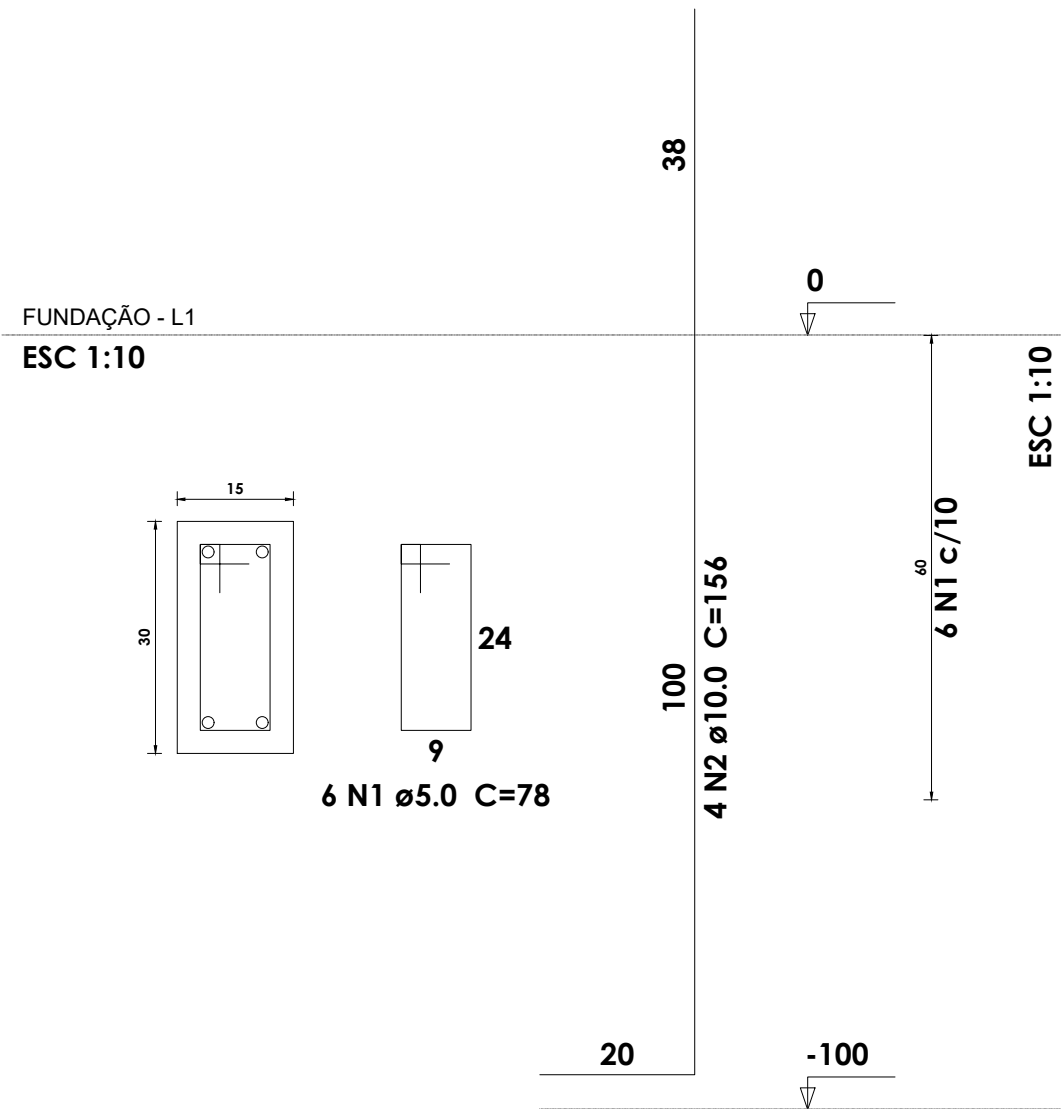
P1=P2=P3=P4=P5=P6=P7=P8=P9=P10=P11=P12  
=P13=P14=P15=P16=P17=P18=P19=P20=P21  
=P22=P23

P1=P2=P3=P4=P5=P6=P7=P8=P9=P11=P12=P13  
=P14=P15=P16=P17=P18=P19=P20=P21=P22

S1=S2=S3=S4=S5=S6=S7=S8=S9=S11=S12=S13  
=S14=S15=S16=S17=S18=S19=S20=S21=S22

P10=P23

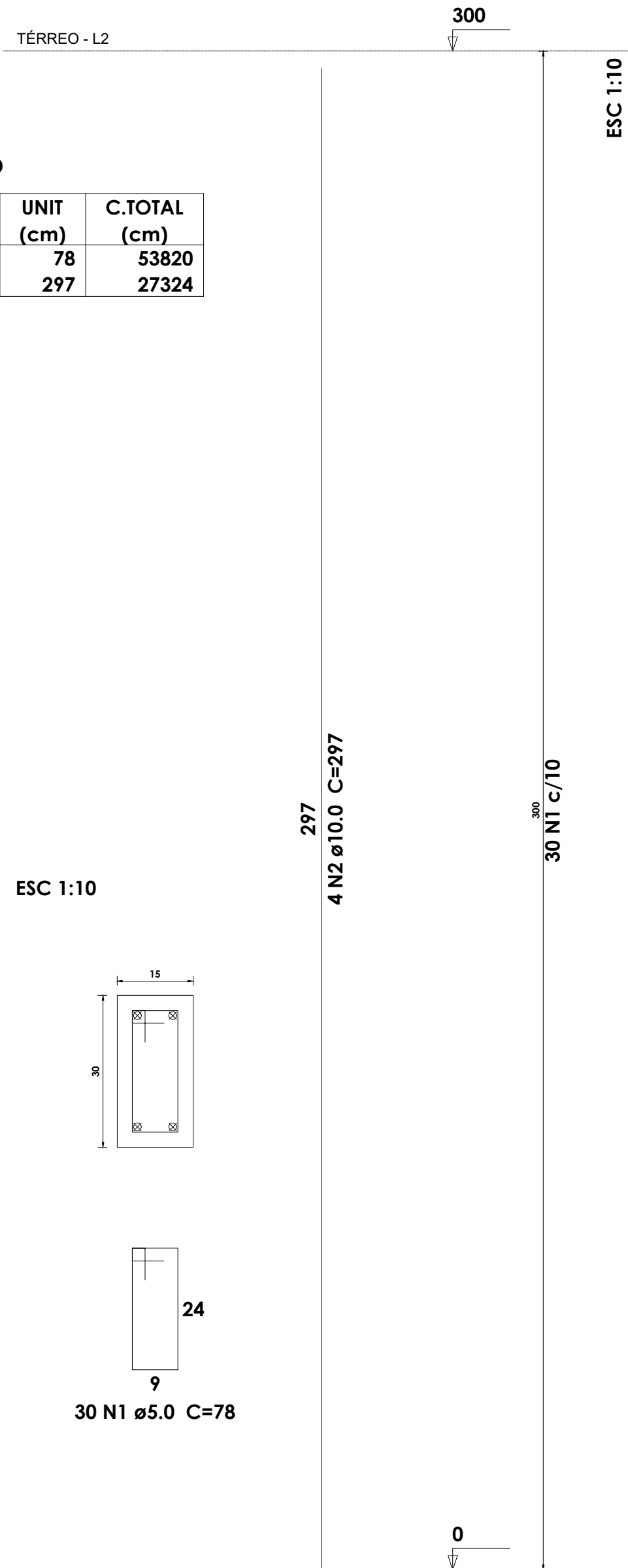
S10=S23



Relação do aço						
ELEMENTO	AÇO	N	DIAM	Q	UNIT (cm)	C.TOTAL (cm)
23xP1	CA60	1	5.0	690	78	53820
	CA50	2	10.0	92	297	27324

Resumo do aço			
AÇO	DIAM	C.TOTAL (m)	PESO (kg)
CA50	10.0	273.3	168.5
CA60	5.0	538.2	83
PESO TOTAL			
CA50		168.5	
CA60		83	

Vol. de concreto total (C-25) = 3.1 m³  
Área de forma total = 62.1 m²



Relação do aço						
ELEMENTO	AÇO	N	DIAM	Q	UNIT (cm)	C.TOTAL (cm)
21xS1	CA60	1	5.0	126	78	9828
	CA50	2	10.0	84	156	13104
	CA50	3	10.0	147	108	15876
	CA50	4	10.0	126	123	15498
2xS10	CA60	1	5.0	12	78	936
	CA50	2	10.0	8	156	1248
	CA50	3	10.0	16	118	1888
	CA50	4	10.0	14	133	1862

Resumo do aço			
AÇO	DIAM	C.TOTAL (m)	PESO (kg)
CA50	10.0	494.8	305
CA60	5.0	107.7	16.6
PESO TOTAL			
CA50		305	
CA60		16.6	

Vol. de concreto total (C-25) = 5.29 m³  
Área de forma total = 45.86 m²